



Drug Use Research & Management Program
 Oregon State University, 2611 SW 3rd Ave. Marquam II, Suite 280Z, Portland, Oregon
 97201-4952
 Phone 503-494-9954 | Fax 503-494-1082

College of Pharmacy

Pharmacy Utilization Summary Report: 2005 (dual-eligibles excluded)

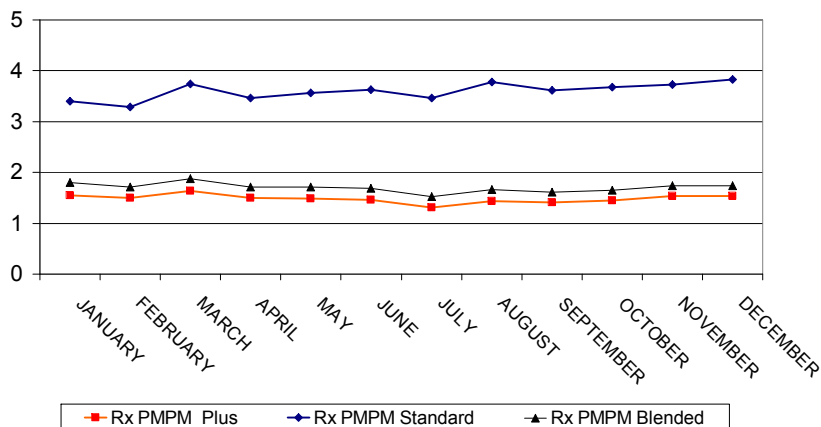
2005	JANUARY	FEBRUARY	MARCH	APRIL	MAY	JUNE	JULY	AUGUST	SEPTEMBER	OCTOBER	NOVEMBER	DECEMBER	YTD
Enrollment													
FFS Members	66,317	66,088	65,984	66,307	64,908	65,045	66,513	65,206	66,734	67,290	63,208	63,585	65,599
OHP Members	317,613	317,772	318,232	318,679	320,414	318,763	316,921	317,395	317,577	317,020	315,653	315,585	317,635
Utilization Percentages													
Generic %	60.6%	60.5%	60.4%	60.8%	60.5%	60.5%	60.6%	60.4%	60.5%	59.7%	59.7%	60.2%	60.4%
Physical Health	64.9%	64.7%	64.6%	64.9%	64.9%	65.0%	65.3%	65.2%	65.2%	64.0%	64.6%	65.5%	64.9%
Mental Health	58.2%	58.2%	58.1%	58.5%	58.1%	58.0%	58.1%	57.8%	57.9%	57.2%	57.0%	57.3%	57.9%
Multisource generic %	99.5%	99.4%	99.4%	99.4%	99.4%	99.4%	99.4%	99.4%	99.4%	99.4%	99.4%	99.4%	99.4%
Physical Health	99.5%	99.5%	99.5%	99.4%	99.4%	99.4%	99.4%	99.4%	99.4%	99.4%	99.4%	99.4%	99.4%
Mental Health	99.5%	99.4%	99.4%	99.4%	99.4%	99.4%	99.4%	99.4%	99.4%	99.4%	99.4%	99.4%	99.4%
PDL %	67.2%	67.4%	68.4%	69.2%	69.3%	69.3%	69.8%	69.7%	70.3%	70.4%	68.6%	69.2%	69.1%
Utilization Data													
Rx PMPM	1.80	1.72	1.88	1.72	1.72	1.69	1.53	1.66	1.61	1.65	1.74	1.73	1.70
OHP Standard	3.40	3.28	3.74	3.47	3.56	3.63	3.47	3.77	3.62	3.68	3.72	3.83	3.60
OHP Plus	1.55	1.50	1.63	1.50	1.49	1.47	1.31	1.43	1.41	1.45	1.54	1.54	1.49
Drug Cost	\$14,627,044	\$14,054,921	\$15,875,419	\$14,539,728	\$14,688,577	\$14,660,328	\$13,867,034	\$14,973,656	\$14,295,250	\$15,000,201	\$14,752,699	\$15,605,592	\$176,940,449
Physical Health	\$4,425,457	\$4,351,114	\$4,881,167	\$4,413,128	\$4,408,659	\$4,334,099	\$4,108,998	\$4,423,708	\$4,198,435	\$4,540,726	\$4,168,363	\$4,518,057	\$52,771,910
Mental Health	\$10,201,587	\$9,703,808	\$10,994,252	\$10,126,600	\$10,279,918	\$10,326,229	\$9,758,036	\$10,549,948	\$10,096,815	\$10,459,475	\$10,584,336	\$11,087,535	\$124,168,540
Cost/Rx	\$60.66	\$61.65	\$63.28	\$62.93	\$64.10	\$64.67	\$66.64	\$67.07	\$65.14	\$66.83	\$64.95	\$68.45	\$64.70
Physical Health	\$50.78	\$52.18	\$53.75	\$53.12	\$54.16	\$54.04	\$56.14	\$56.31	\$53.87	\$56.53	\$51.90	\$56.04	\$54.07
Mental Health	\$66.26	\$67.11	\$68.69	\$68.45	\$69.58	\$70.49	\$72.34	\$72.92	\$71.35	\$72.58	\$72.08	\$75.24	\$70.59
Rx PMPM	1.80	1.72	1.88	1.72	1.72	1.69	1.53	1.66	1.61	1.65	1.74	1.73	1.70
Physical Health	1.31	1.26	1.38	1.25	1.25	1.23	1.10	1.20	1.17	1.19	1.27	1.27	1.24
Mental Health	0.48	0.46	0.50	0.46	0.46	0.46	0.43	0.46	0.45	0.45	0.47	0.47	0.46
Cost PMPM	\$98.85	\$96.38	\$108.52	\$98.33	\$100.00	\$99.03	\$92.57	\$101.08	\$94.71	\$100.47	\$99.48	\$106.19	\$99.63
Physical Health	\$66.73	\$65.84	\$73.98	\$66.56	\$67.92	\$66.63	\$61.78	\$67.84	\$62.91	\$67.48	\$65.95	\$71.06	\$67.06
Mental Health	\$32.12	\$30.54	\$34.55	\$31.78	\$32.08	\$32.39	\$30.79	\$33.24	\$31.79	\$32.99	\$33.53	\$35.13	\$32.58

PMPM calculated as sum of physical health and mental health carve-outs
 YTD = year to date - monthly average, except total expenditures is sum of months
 Data from DSSURS and OMAP FCHP first of month reports
 Dates are service dates
 All eligibility groups included except for CAWEM, QS, QB
 Multisource generic = brand drugs dispensed DAW when generic available
 PDL policy of 08/01/04 applied for dates before 08/01/04
 Drug Cost = Amt Paid + Copay + Other Insurance Paid - Prof Fee

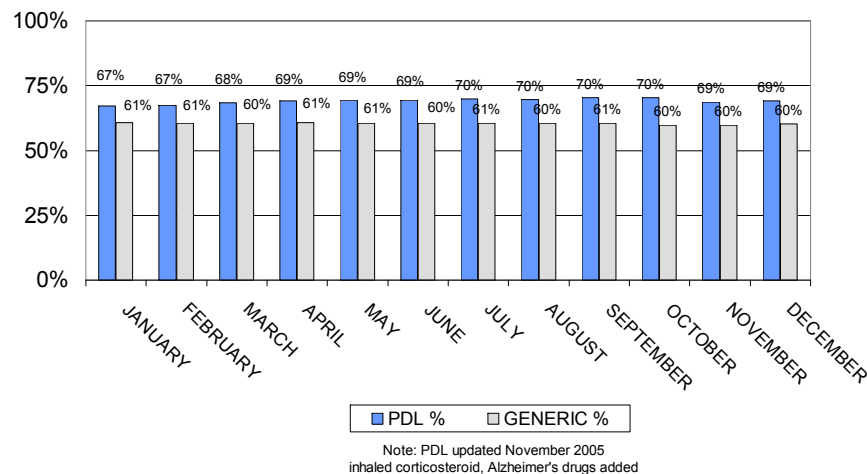


Pharmacy Utilization Summary Report: 2005 (dual-eligibles excluded)

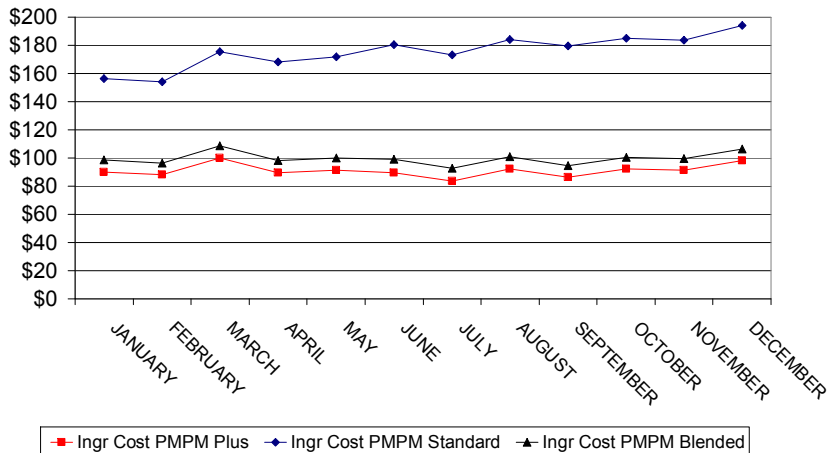
RX Dispensed PMPM: 2005



Percent Generic and PDL: 2005



Ingredient Cost PMPM: 2005



Ingredient Cost PMPM Comparisons: 2004 - 2005

